



Digital Spirometry System

Features:

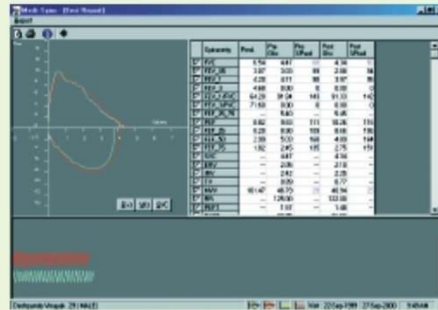
- Easily sterilizable pneumotach
- Uninterrupted operation with battery backup
- Real-time display of flow-volume loops
- Comparison of pre & post medication tests
- Automatic interpretation
- Wireless Bluetooth communication



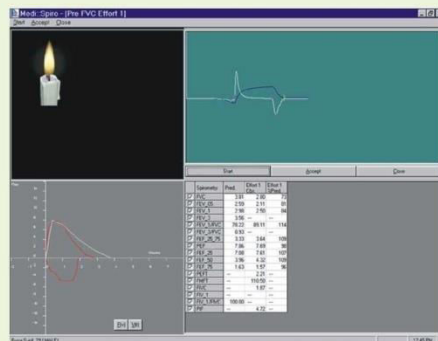
Medi::Spiro
Wireless Spirometer

TECHNICAL SPECIFICATIONS

Technical Specifications	Medi::Spiro
Display	: PC Monitor
Flow Measurement	: Screen type pneumotach
Volume Measurement	: Flow integration
Flow Range	: 15 L/second
Volume Range	: 0-8 Liters (BTPS)
Flow Accuracy	: 5% of reading
Volume Accuracy	: 3% of reading
Measuring Time	: 0-30 seconds
Graph Scale	: Meets ATS standards for graph
Prediction Table	: Indian, ECCS & user configurable
Test Performed	: FVC, MVV, SVC & post-bronchodilators
Patient Incentive Screen	: Candle & Cylinder Ball
Power Source(s)	: 230 Volt AC Mains
Interface	: Bluetooth
Printer Type	: PC compatible
Storage	: On Hard Disk Drive
Interpretation	: Automatic



Flow-Volume Loop - Medi::Spiro



Patient incentive screen - Medi::Spiro

Measured Parameters

FVC	FEV0.5	FEV1
FEV3	FEV1/FVC	FEV3/FVC
FEF25-75	PEF	FEF-25
FEF-50	FEF-75	SVC
ERV	IRV	TV
RR	PEFT	FMFT
FIV1	FIV1/FIVC	PIF
MVV		

Standard Accessories

Battery Charger /	: 1 No.
Power Cord	
Nose Clip	: 1 No.
Software CD	: 1 No.
Operating Manual	: 1 No.



Maestros Electronics & Telecommunications Systems Limited

Registered Office:

EL 66, TTC Industrial Area, Electronic Zone, Mahape, Navi Mumbai - 400 710, INDIA

Tel.: +91-22-2761 1193

Website : www.metstl.in